

# Helical Screw Pile

## From Roanoke Marshes Light, Croatan Sound, NC (1877-1955)

*Pre-treatment drawing*  
18 September 2013

Guide to Components (top to bottom)  
including alternative terminology

- 1. Extension cylinder/shaft/envelope (damaged)
- 2. Bracket
  - a. Horizontal support beams (damaged)
  - b. Tie rods (damaged)
- 3. Coupling
- 4. Lead cylinder/shaft/envelope
  - c. Wooden stem/pile
  - d. Wooden stem/pile tip (damaged)
  - e. Wooden stem/pile shoe (missing)
- 5. Screw/helix/spiral/flange/worm
  - f. Blade
  - g. Leading edge
  - h. Trailing edge

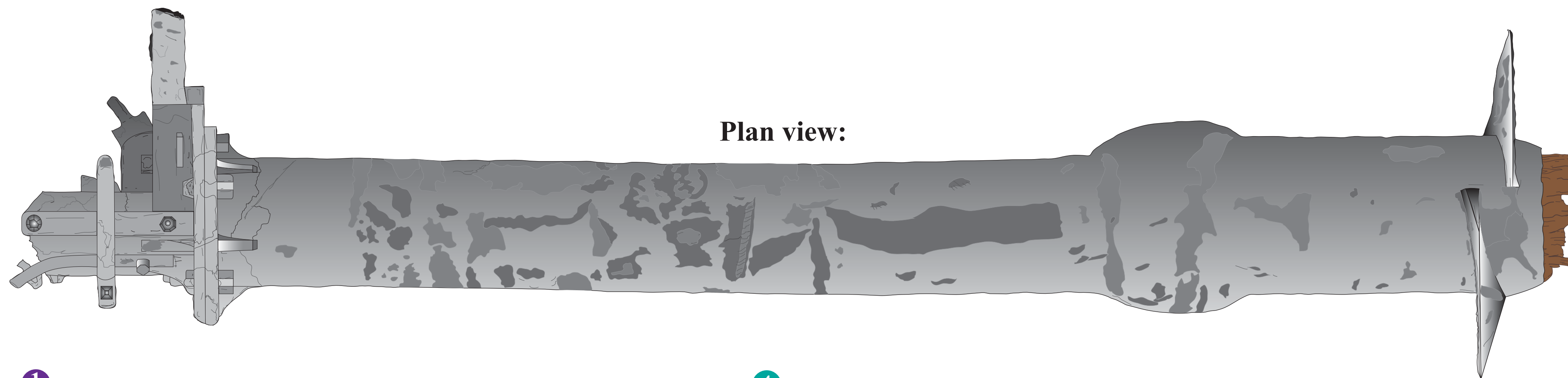
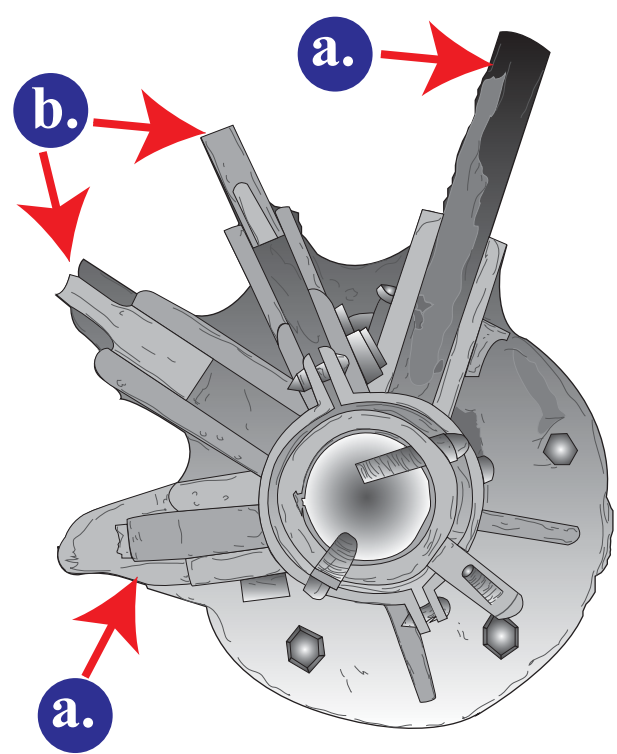


**Final drawing by:** Nathan Richards

**Original drawings by:** Kara Fox, Chelsea Freeland, Phil Hartmeyer, Sara Kerfoot, Alison Miller, Michele Panico, Julie Powell, Alyssa Reisner, William Sassorossi, Emily Steedman, Sonia Valencia, Jeneva Wright, & Caitlin Zant

**Thanks to:** Bradley Rodgers & Calvin Mires (East Carolina University); Erin Burke, Jamie Daniels, Kermit Skinner, & Barry Wickre (Town of Manteo); Mo Gabr & Billy Edge (UNC-Coastal Studies Institute)

**Bracket end:**



**Screw end:**

