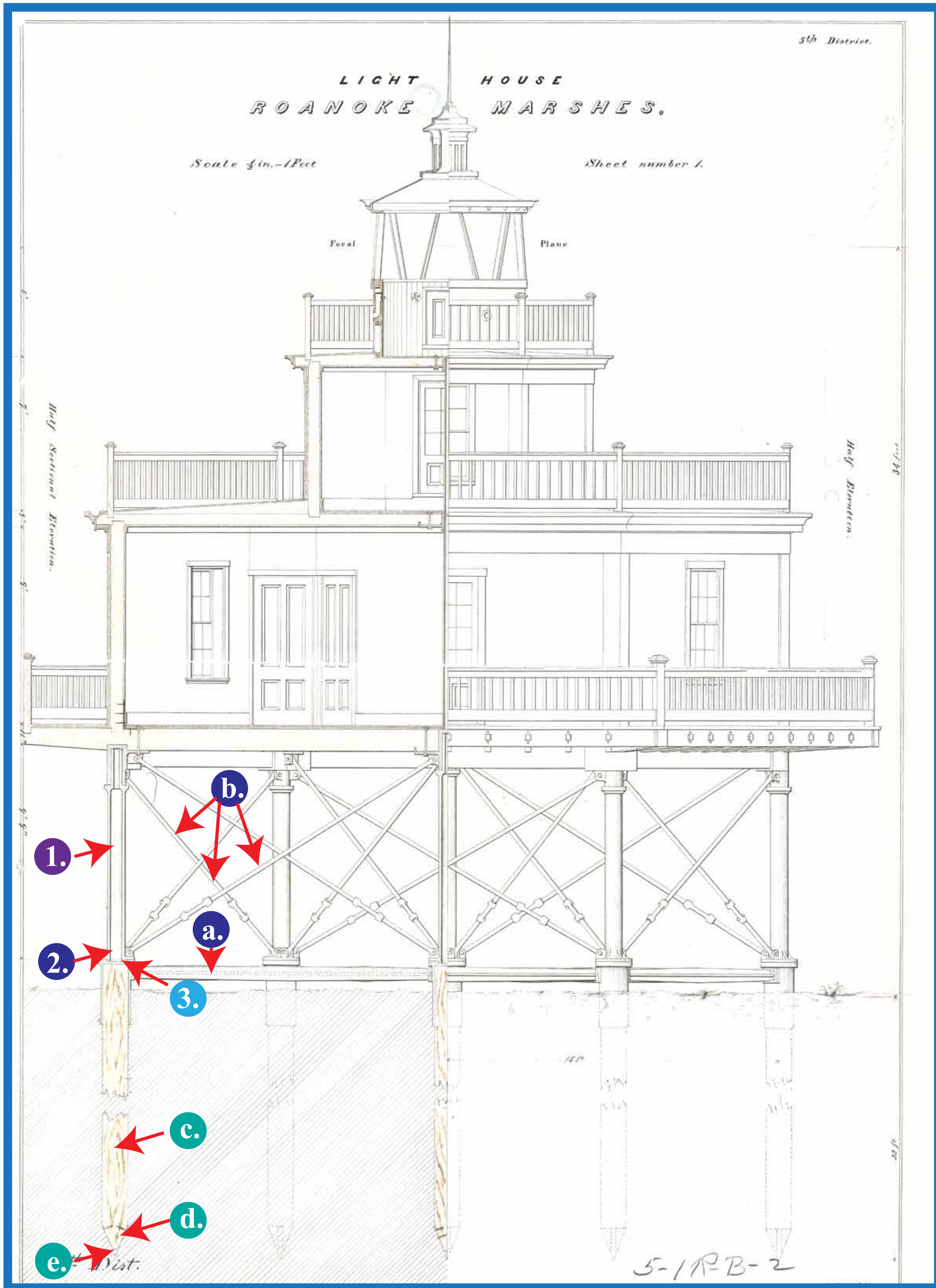




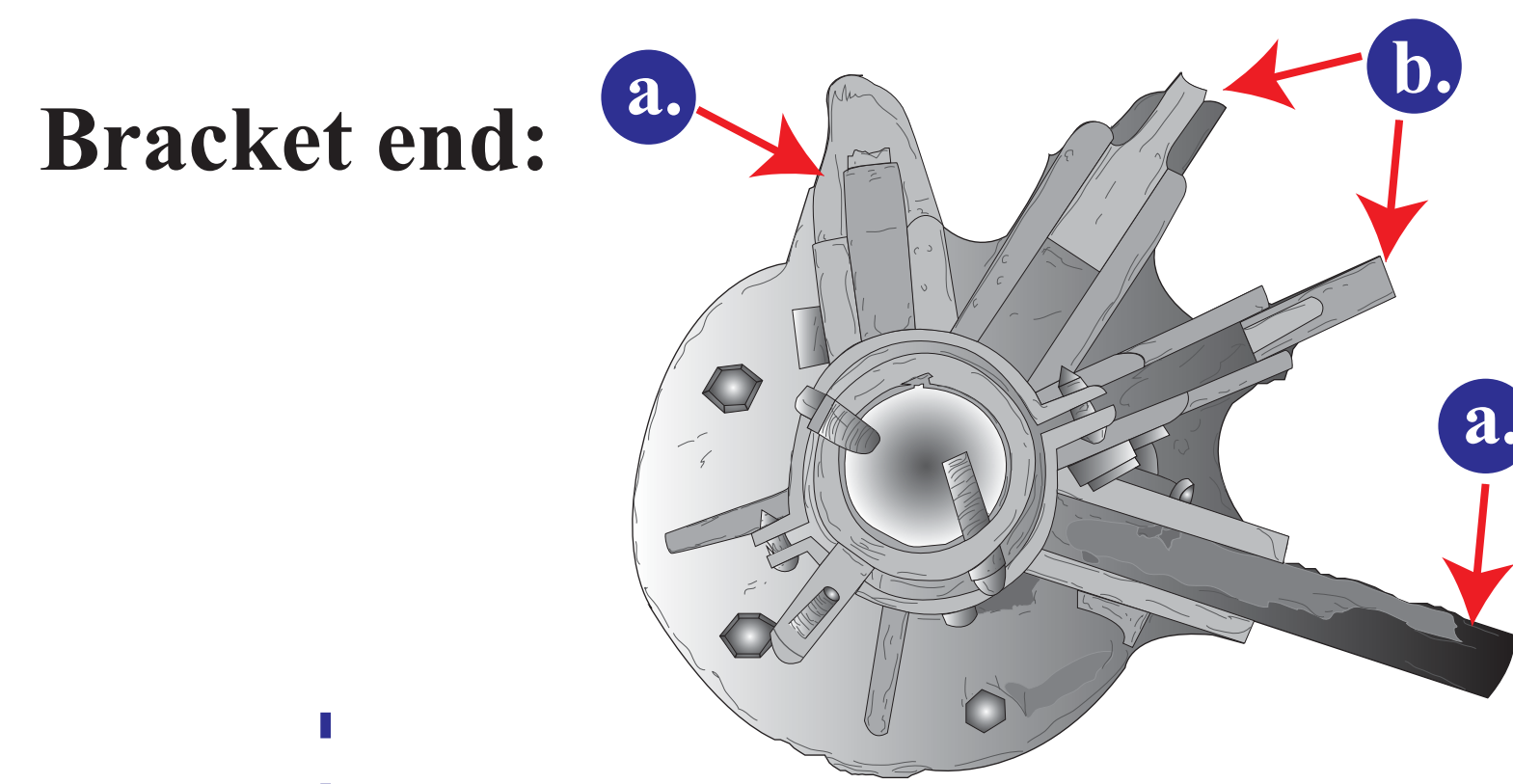
Roanoke Marshes Light (date unknown).  
(United States Coast Guard)



"Light House, Roanoke Marshes," half sectional elevation & half elevation (with annotations) (National Archives)

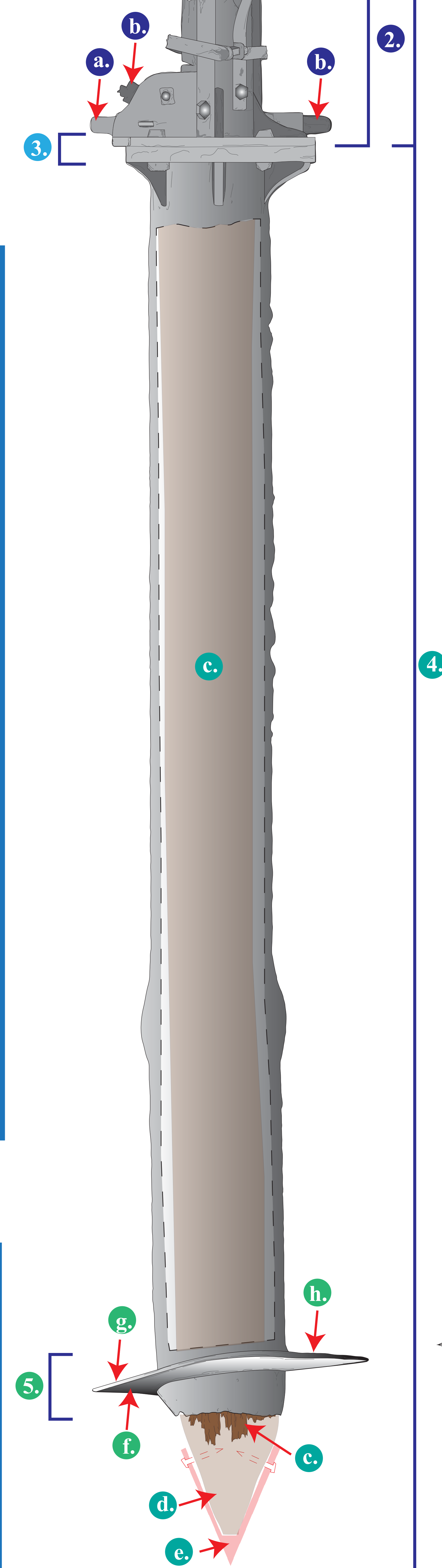
**Guide to Components (top to bottom)  
including alternative terminology**

- 1. Extension cylinder/shaft/envelope (damaged)
- 2. Bracket
  - a. Horizontal support beams (damaged)
  - b. Tie rods (damaged)
- 3. Coupling
- 4. Lead cylinder/shaft/envelope
  - c. Wooden stem/pile
  - d. Wooden stem/pile tip (damaged)
  - e. Wooden stem/pile shoe (missing)
- 5. Screw/helix/spiral/flange/worm
  - f. Blade
  - g. Leading edge
  - h. Trailing edge



Scale:  
0 1 2 3 feet

"Left" profile & cutaway view:



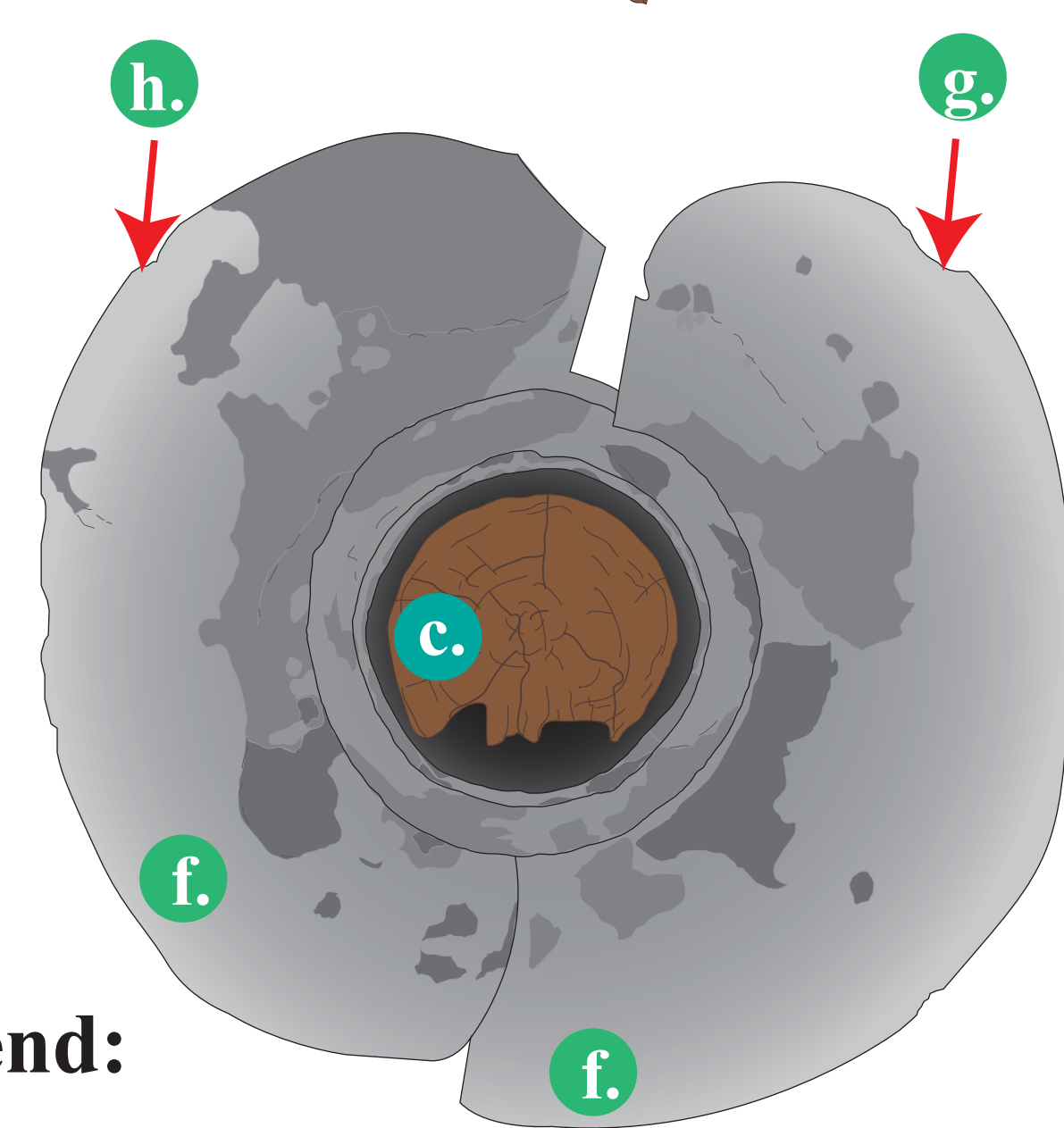
Plan view:



"Right" profile view:



Screw end:



Final drawing by: Nathan Richards

Original drawings by: Kara Fox, Chelsea Freeland, Phil Hartmeyer, Sara Kerfoot, Alison Miller, Michele Panico, Julie Powell, Alyssa Reisner, William Sassorossi, Emily Steedman, Sonia Valencia, Jeneva Wright, & Caitlin Zant

Thanks to: Bradley Rodgers & Calvin Mires (East Carolina University); Erin Burke, Jamie Daniels, Kermit Skinner, & Barry Wickre (Town of Manteo); Mo Gabr & Billy Edge (UNC-Coastal Studies Institute)

**Helical Screw Pile**  
From Roanoke Marshes Light  
Croatan Sound, NC (1877-1955)  
*Pre-treatment drawing*  
18 September 2013

