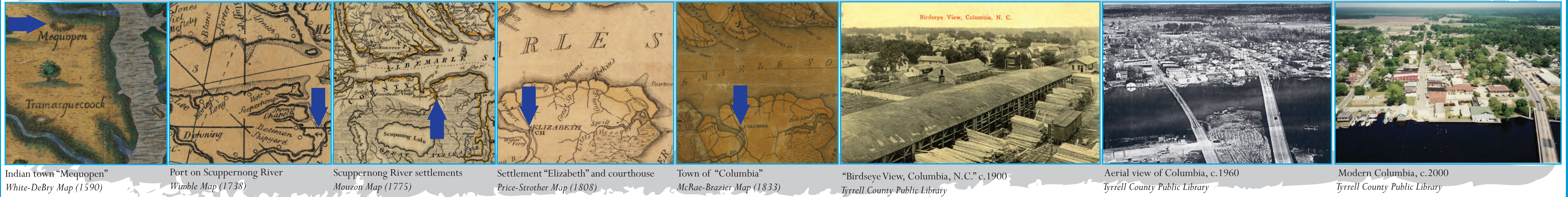


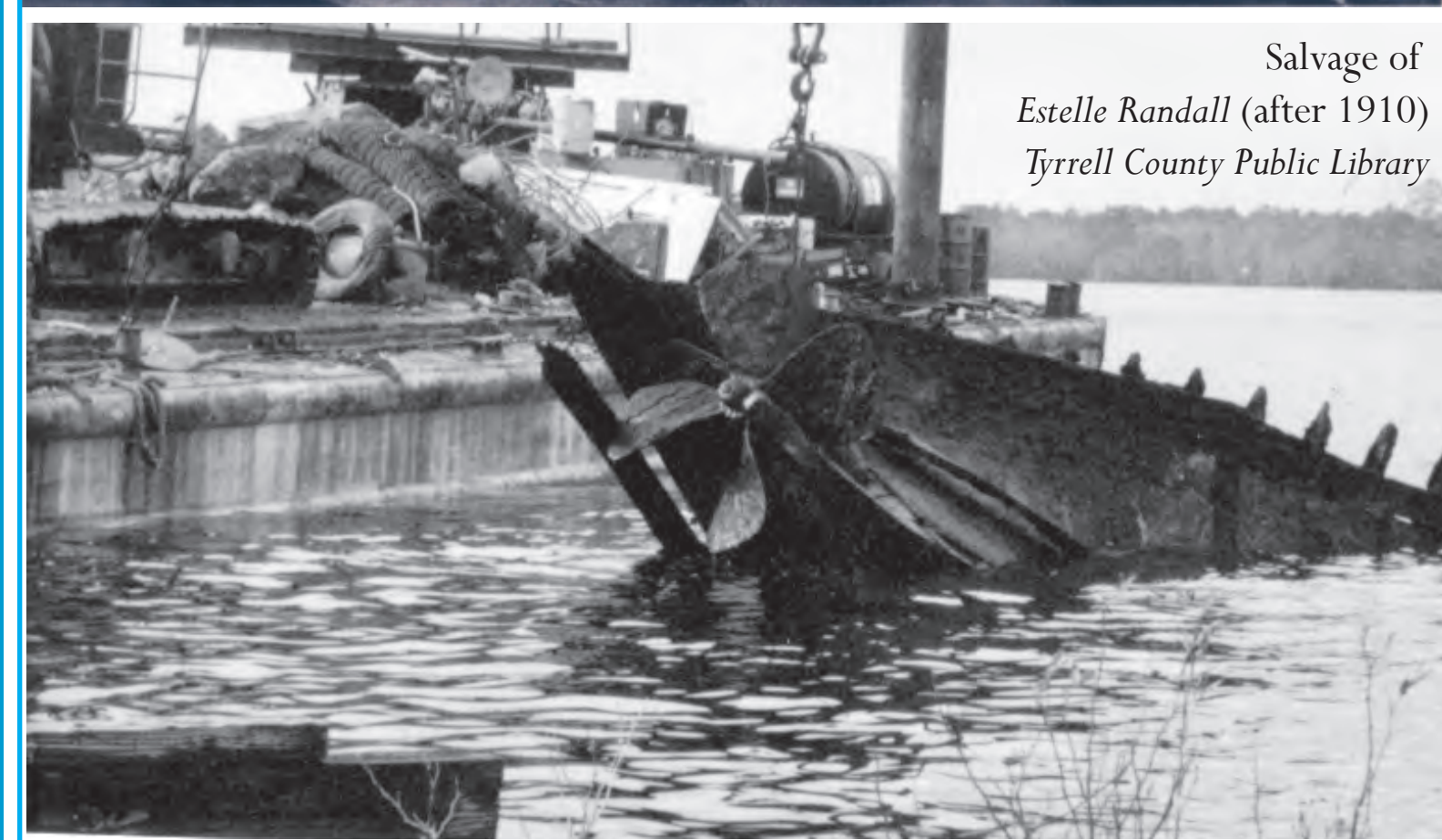
Settlement and development of Columbia (c.1590-2012)



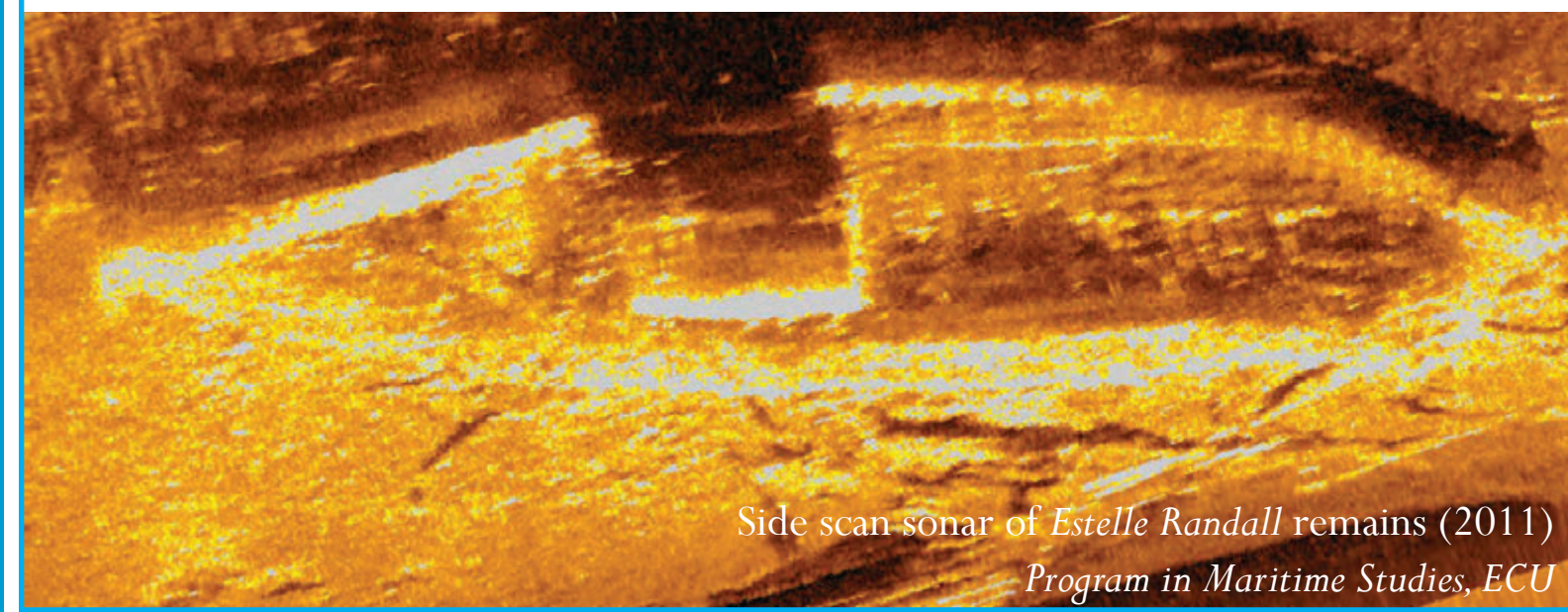
Indian town "Mequopen" White-DeBry Map (1590) Port on Scuppernon River Wimble Map (1738) Scuppernon River settlements Mouzon Map (1775) Settlement "Elizabeth" and courthouse Price-Strother Map (1808) Town of "Columbia" McRae-Brazier Map (1833) "Birdseye View, Columbia, N.C." c.1900 Tyrrell County Public Library Aerial view of Columbia, c.1960 Tyrrell County Public Library Modern Columbia, c.2000 Tyrrell County Public Library



Painting of Estelle Randall (c.1898) Underwater Archaeology Branch

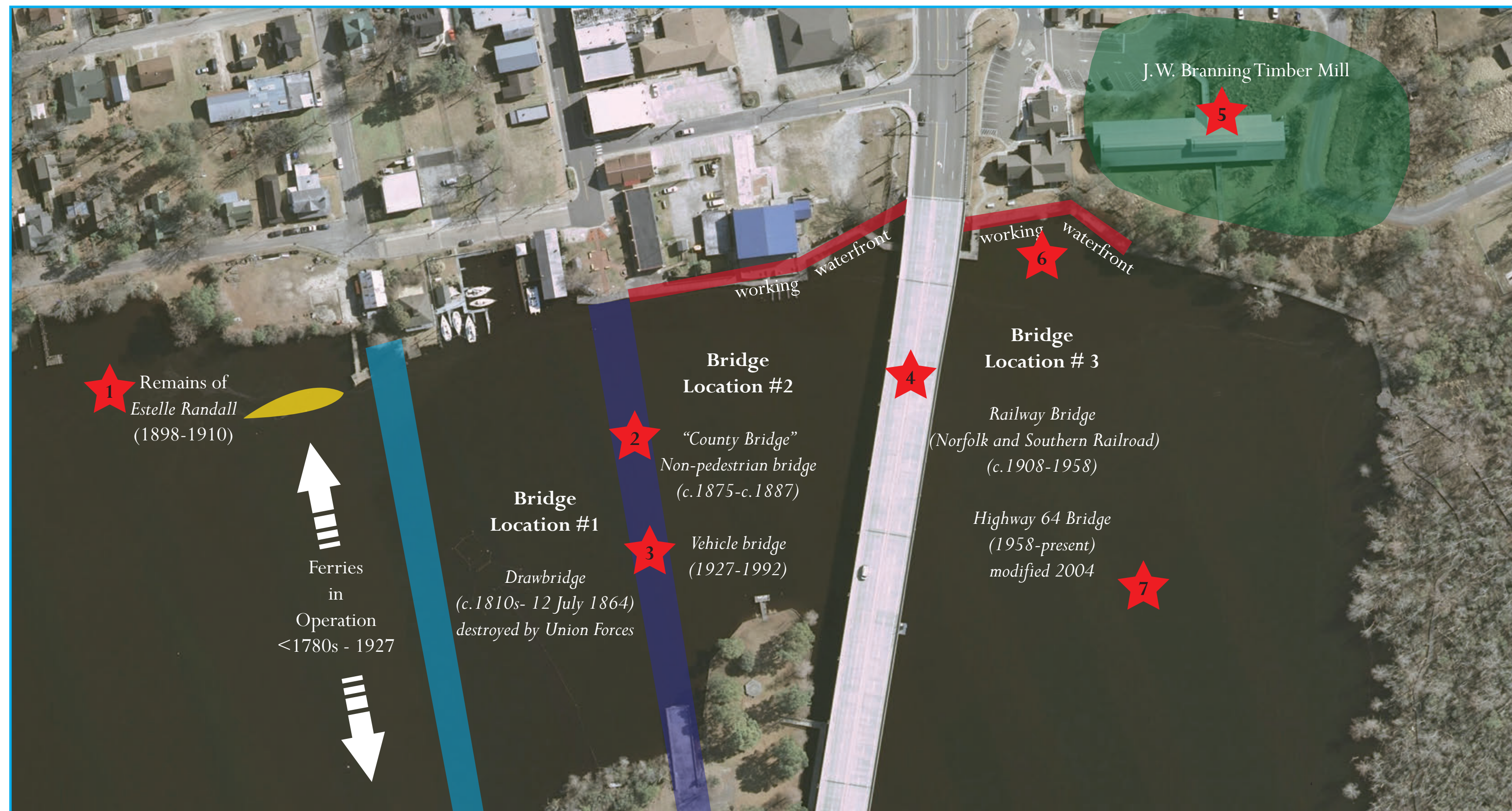


Salvage of Estelle Randall (after 1910) Tyrrell County Public Library



Side scan sonar of Estelle Randall remains (2011) Program in Maritime Studies, ECU

Acknowledgements: East Carolina University (Daniel Berry, Aaron Beebe, John Bright, Daniel Brown, David Butts, Jeff O'Neill, & William Schilling); UNC-Coastal Studies Institute (John McCard, David Sybert, Robert McClelland, & Nancy White, UNC-CSF Foundation (Bill Massey); Pocomo Arts Folk School (Heather Phillips & Karen Clough); Tyrrell County Public Library (Debbie Davasport & Linda Markham); Tyrrell County Register of Deeds (Melanie Armstrong & Gene Reynolds); Town of Columbia (Michael Griffin & Rhett White); Full Circle Crab Company (Will Phillips); Our generous community partners (Clay Causey, Public Causey, Ray Davasport, Walter Davasport, Lauren Hesseman, Sue Griffin, Charlie Ogletree, Widge Ogletree, Don Redford, Bill Smith, Franco Smith, Debbie Ute, Doreen Van Derpep, & Sunny VanDerpep).



1 Remains of Estelle Randall (1898-1910)

2 "County Bridge" Non-pedestrian bridge (c.1875-c.1887)

3 Vehicle bridge (1927-1992)

4 Bridge Location #1 Drawbridge (c.1810s- 12 July 1864) destroyed by Union Forces

5 Bridge Location #2 "County Bridge" Non-pedestrian bridge (c.1875-c.1887)

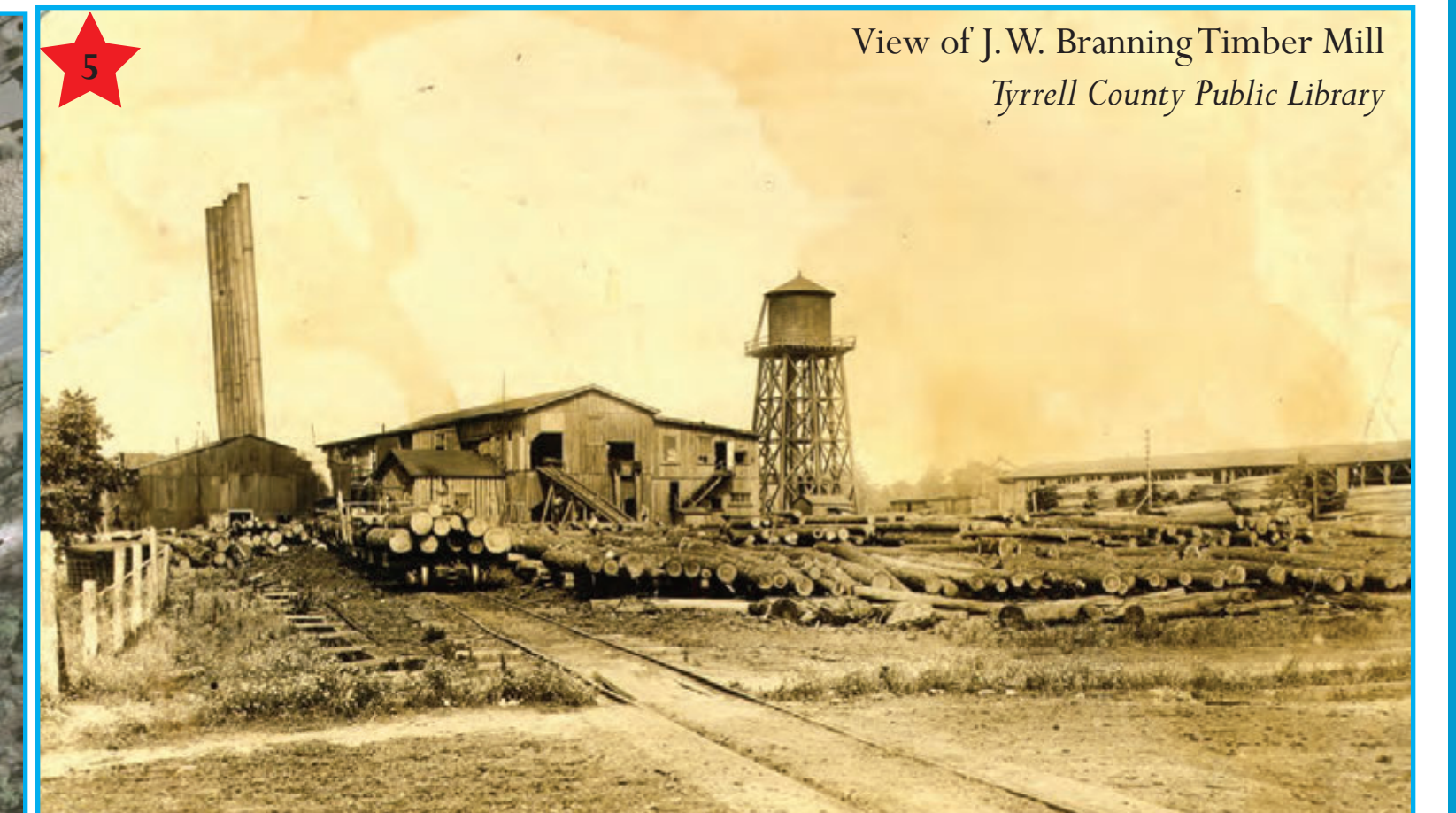
6 Bridge Location #3 Railway Bridge (Norfolk and Southern Railroad) (c.1908-1958)

7 Highway 64 Bridge (1958-present) modified 2004

J.W. Branning Timber Mill

working waterfront

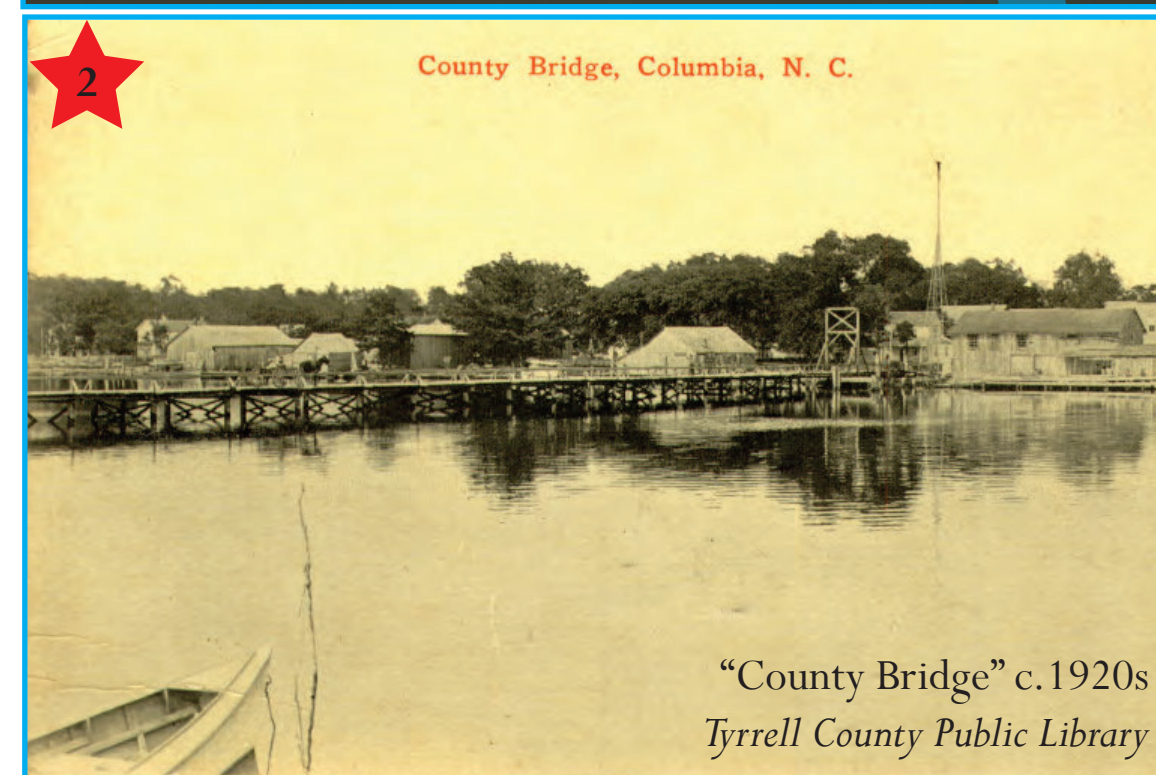
Ferries in Operation <1780s - 1927



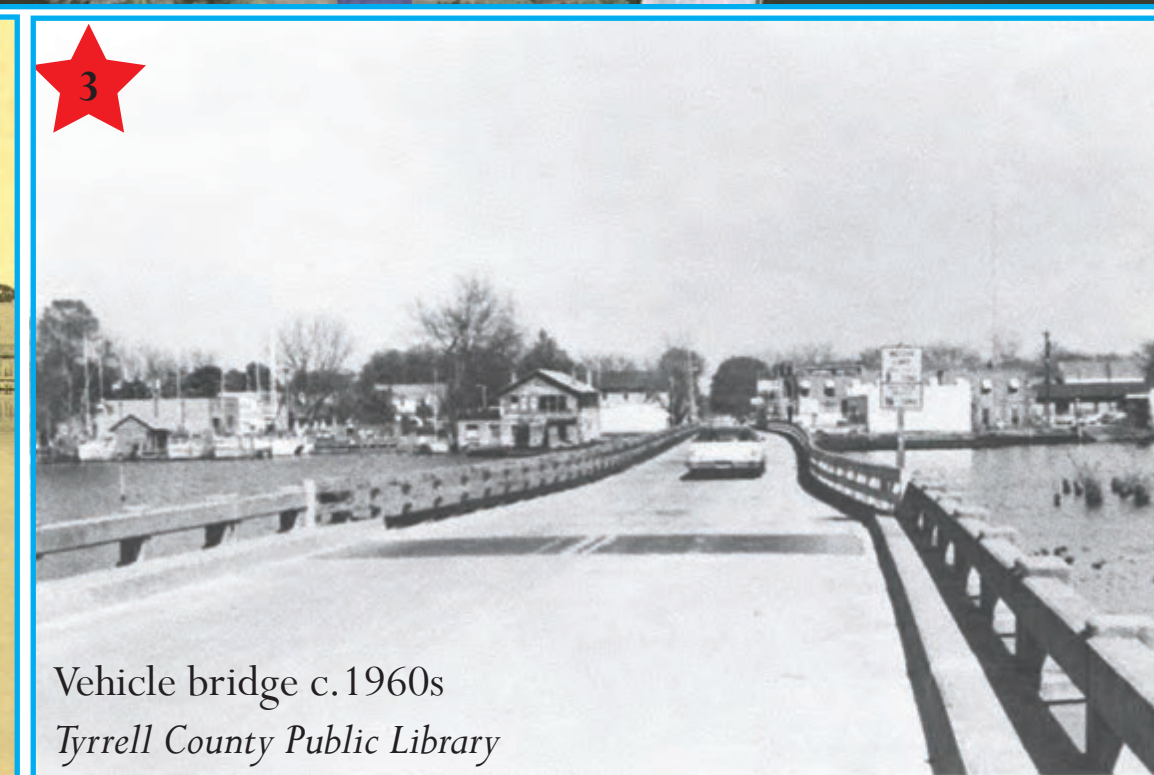
View of J.W. Branning Timber Mill Tyrrell County Public Library



View of Columbia's working waterfront Tyrrell County Public Library



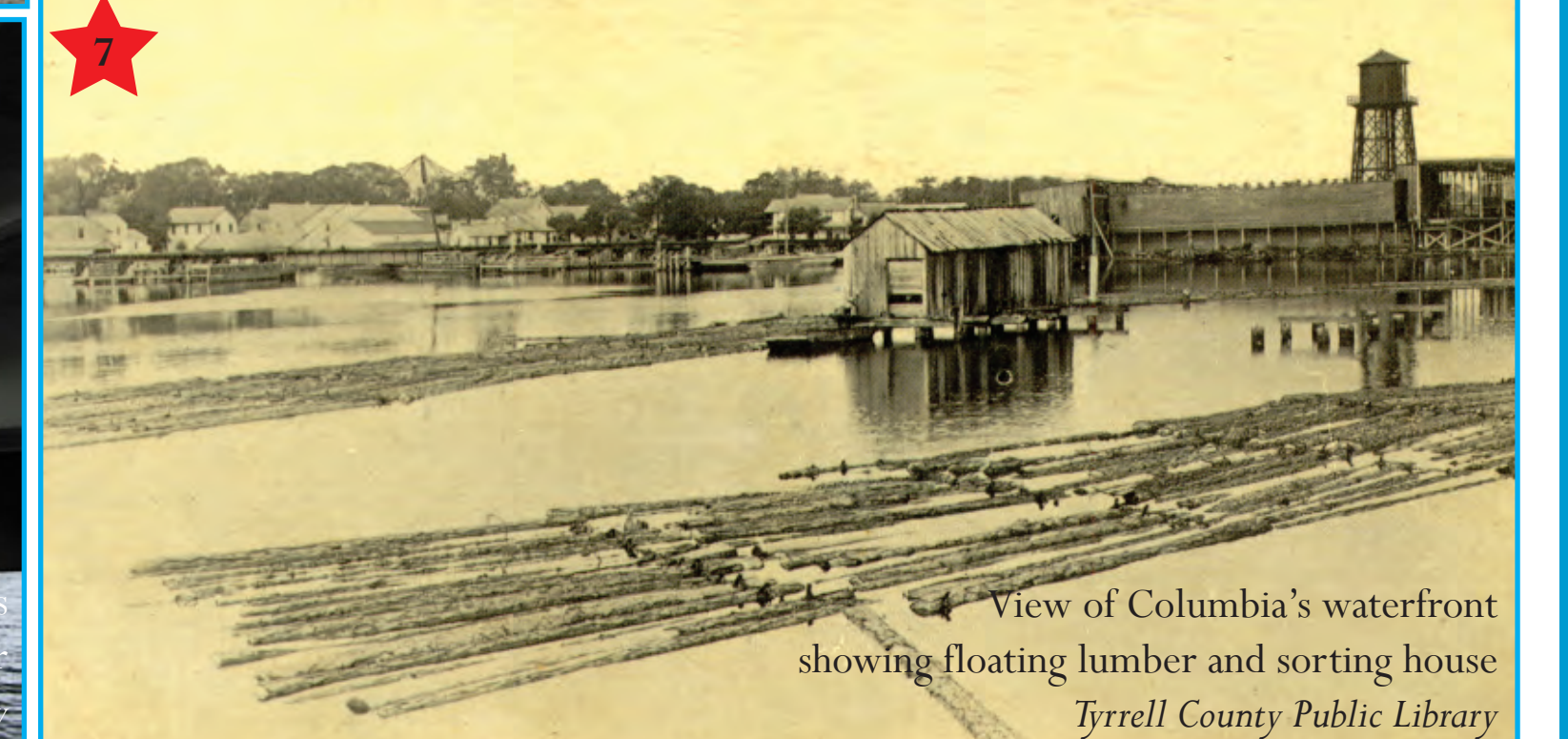
"County Bridge" c.1920s Tyrrell County Public Library



Vehicle bridge c.1960s Tyrrell County Public Library



The "old" and the "new" bridges alongside each other Tyrrell County Public Library



View of Columbia's waterfront showing floating lumber and sorting house Tyrrell County Public Library



Columbia: An Historic Waterfront
Tyrrell County, North Carolina
 (Lat. 35.9179°N Long. 76.2498°W)

